

## Case Study: Selkirk Metals Corporation, Ruddock Creek Project

Selkirk Metals Corp. is proposing the development of a zinc-lead underground mine at its Ruddock Creek Property. It is located in the Monashee Mountains in southeast British Columbia, approximately 77 km east of Clearwater, BC and 45 km southeast of Blue River, BC.

Exploration has shown a deposit with indicates resources of 5 million tonnes at 7.5% Zinc (Zn) and 2.5% Lead (Pb). An underground mining method is proposed with an annual production rate of 700,000 tonnes per year, approximately 2000 tonnes per day of ore over a projected 10 to 15 year mine life, depending on the high probability of new discoveries along the known mineralized trend.

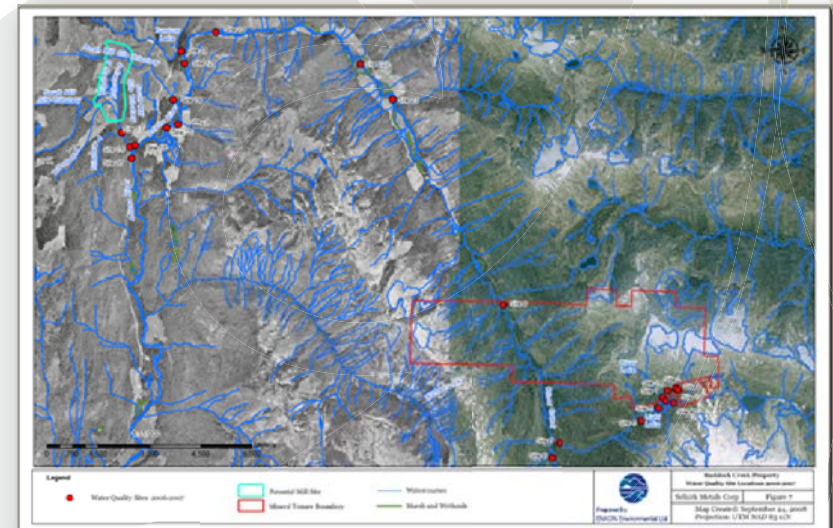


Creek Property in 2006, 2007 and 2008. The studies included climate, hydrology, water quality, benthic invertebrates, periphyton, sediments, fish, and wildlife and vegetation.

A meteorological station was installed in 2006 near Light Lake at an elevation of about 1770 m. Standard meteorological observations consisting of wind speed and direction, temperature and precipitation are being measured and recorded at the station. Two stream flow gauging stations were installed in early July 2006 in order to establish baseline hydrologic patterns in adjacent watercourses.



ENKON Environmental Limited supported by Levelton Consultants Ltd. (climate) and Northwest Hydraulics Consultants (hydrology) conducted environmental baseline studies at Ruddock



# Case Study: Selkirk Metals Corporation, Ruddock Creek Project

(continued)

Water samples were collected from twelve sites from streams draining the Ruddock Creek Property three times in 2006 and six times in 2007.



ENKON plans to collect benthic invertebrate samples both upstream and downstream of the two proposed mill and/or tailings locations. Future sampling will include periphyton (attached algae) samples from rocks, which will be sent to laboratories for taxonomic identification and chlorophyll analyses. Stream bed sediments will also be collected from the sites sampled for periphyton.

ENKON conducted reconnaissance level fish and fish habitat surveys in 2006, 2007 and 2008. The field program included visual habitat assessments and fish distribution surveys.

During the 2006-2007 baseline surveys, ENKON conducted aerial surveys by helicopter focusing on the detection of large mammals including caribou, mountain goat, grizzly bear and wolverine.

ENKON will continue to collect baseline data as required through the British Columbia Environmental Assessment Act process.



---

**ENKON** Environmental

Contact:  
Cameron Kring,  
Director of Business  
ckring@enkon.com  
t: 1-800-374-5291

Victoria  
Suite 310 - 730 View Street  
Victoria, BC, Canada  
V8W 3Y7  
t: 250-480-7103

Vancouver  
207 - 5550 152nd Street  
Surrey, BC, Canada  
V8S 5J9  
t: 604-574-4477