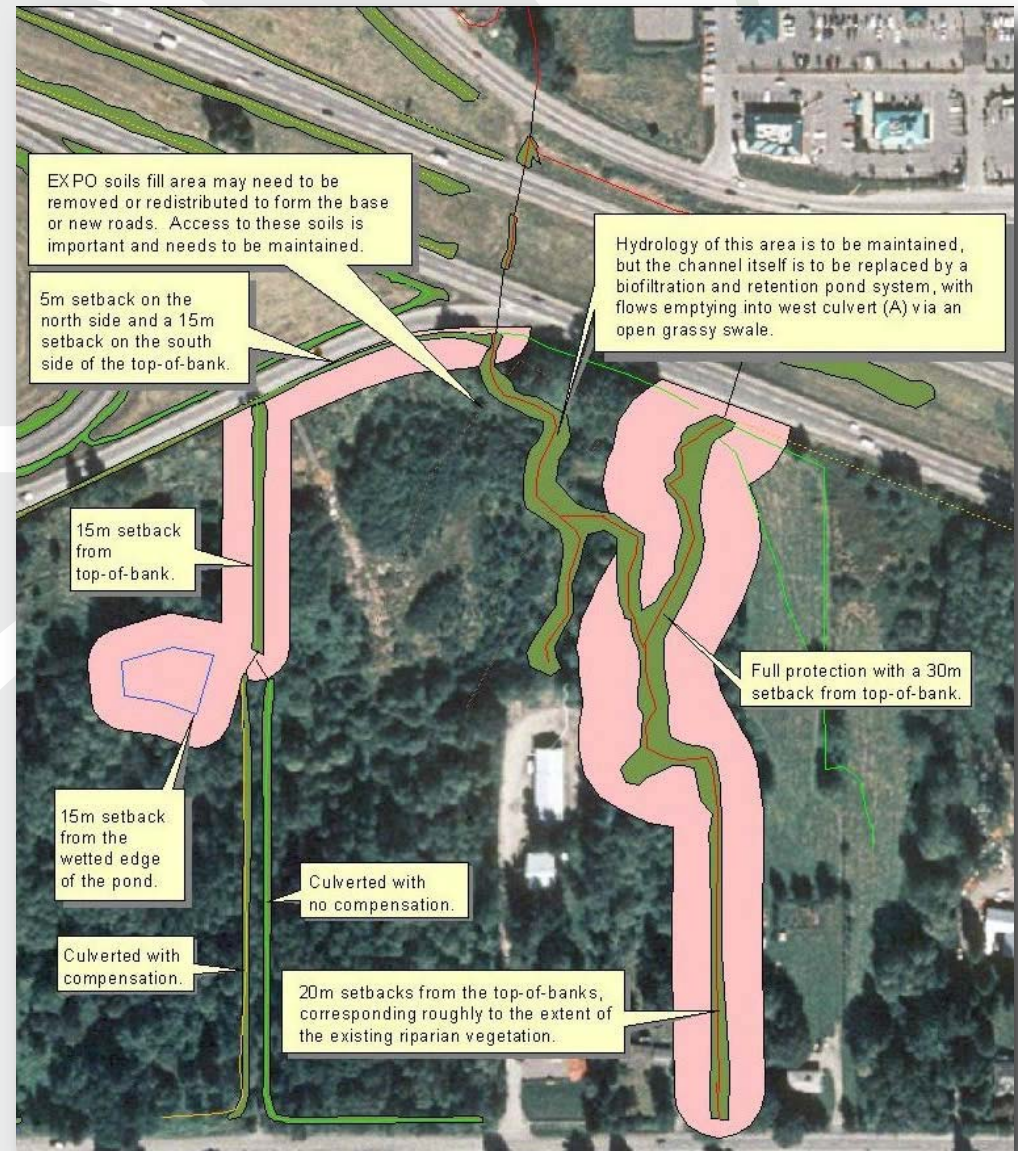


ENKON Environmental

TRANSPORTATION

Case Study: Highway Interchange, Langley, BC

The Province of British Columbia re-developed the 200th Street and Highway #1 Interchange through a design-build-develop contract. The interchange and associated commercial development are located at the headwaters of Latimer Creek, an important salmon-producing stream. ENKON Environmental Limited was hired as the environmental consultant for the design-build-develop team.



Case Study: Highway Interchange, Langley BC

(continued)

ENKON prepared an environmental impact assessment of the project, which identified loss of fish habitat associated with culvert extensions from highway re-alignment and widening. ENKON also designed habitat compensation works, which included culvert removal, construction of a new 100-m long salmon/trout spawning and rearing channel, riparian plantings and re-location of a roadside drainage ditch. A Section 35(2) authorization for the



culverts was obtained from Fisheries and Oceans Canada (DFO) in August 2002.

Two new culverts were installed during the 2002 “fisheries window.” ENKON provided environmental monitoring during culvert removal and installation and oversaw construction of the compensation channels. Subsequently, ENKON monitored the compensation works for five years to ensure that they were functioning as intended.

ENKON Environmental

Contact:
Cameron Kring,
Director of Business
ckring@enkon.com
tf: 1-800-374-5291

Victoria
Suite 310 - 730 View Street
Victoria, BC, Canada
V8W 3Y7
t: 250-480-7103

Vancouver
207 - 5550 152nd Street
Surrey, BC, Canada
V8S 5J9
t: 604-574-4477